



THE DREAM PROGRAM

OPPORTUNITY IMPACT
INVESTMENT PROSPECTUS

WWW.DREAMPROGRAM.ORG

**Camp
DREAM is a
place for
explorational
education
in the
Northwoods
of Vermont.**



As regions throughout Vermont, Philadelphia, and Boston see exponential growth, we set our sights on being able to provide an enriching cost-free Camp Dream opportunity for every mentee enrolled in our programs. Please consider supporting our endeavors to grow opportunities for Camp DREAM participation.

BENEFITS OF EXPLORATIONAL ENRICHMENT:

1. Improved Mental Health
2. Improved Physical Health
3. Problem Solving Skills
4. Increased Academic Performance
5. Environmental Awareness

OPPORTUNITIES OF IMPACT:

Camp DREAM Bathhouse (\$45K).....4-6

Camp DREAM Archery Range (\$20K)...7-9

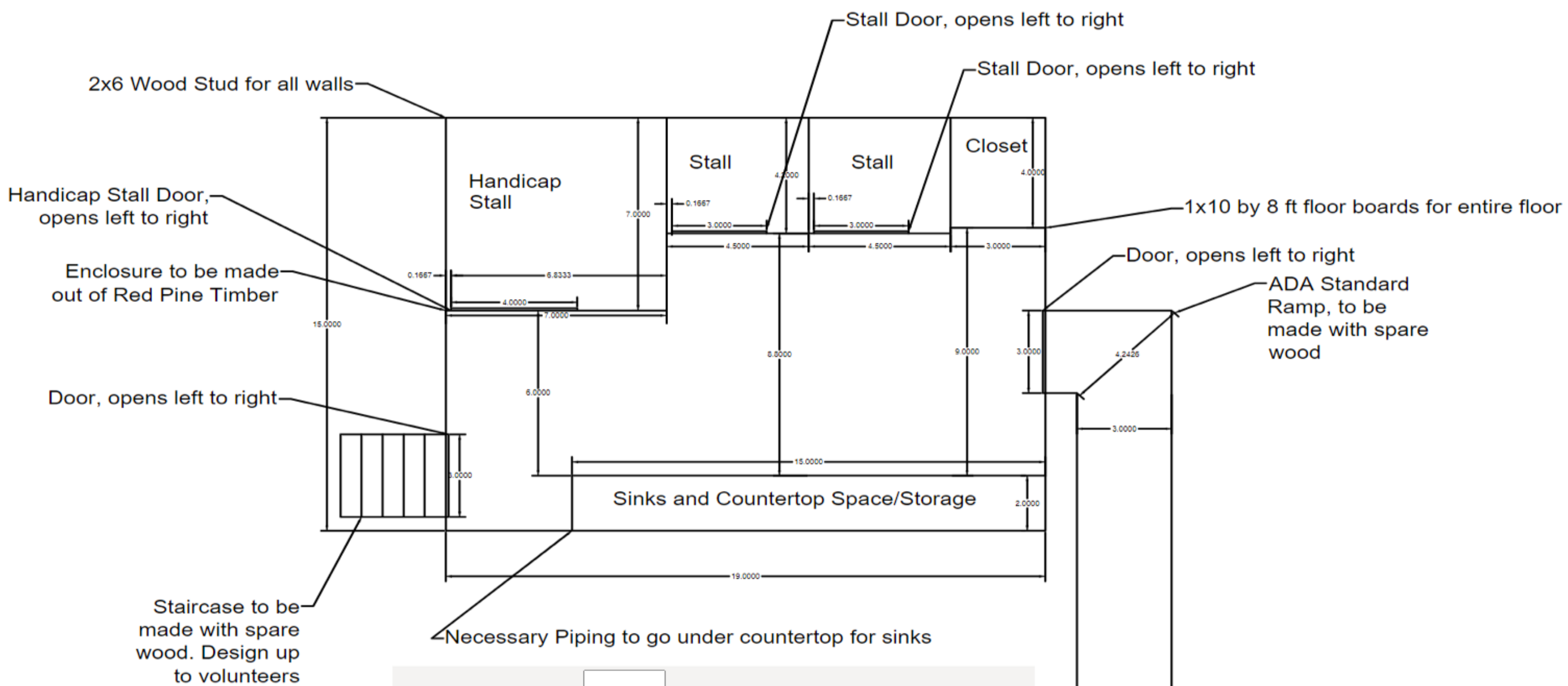
Camp DREAM Cabin (\$55K).....10-11

Camp DREAM Waterfront (\$20K).....12-14
Access Deck



Camp DREAM Bathhouse \$45,000





Dimensions & Details of Enclosure Design:

19' x 15'

8' Walls

4 concrete foundation holes (2'x2'x4')

No windows except for doors

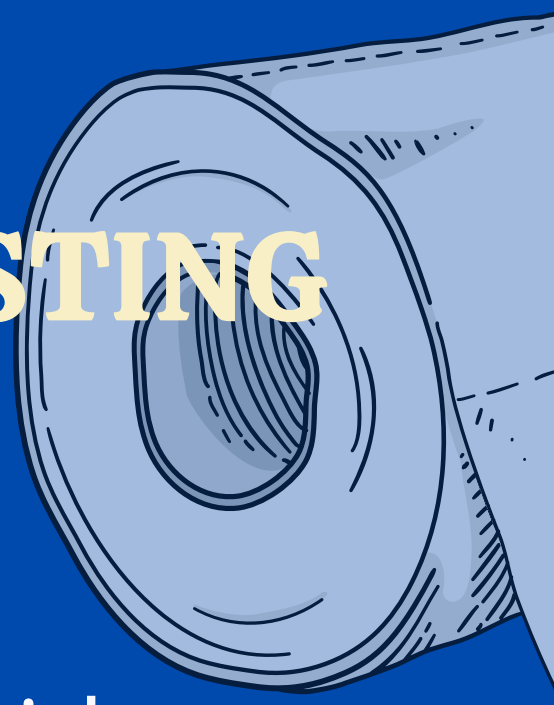
Air vents in each stall

Roof slope is 41.3 degrees

Roof height is 6.6' (Around 79 inches)

Gable roof from North to South sides of structure

BENEFITS OF COMPOSTING TOILETS:



Urine-diverting toilet with gray water reuse

Solid-only toilet with encouragement to urinate in woods

Solid and liquid toilet

Urine + human manure = worse in combination than separate

Kills aerobic microbes and encourages anaerobic fermentation (very smelly!)

Urine has valuable nutrients for plants

Discourage urinating into solid-waste composters

Reduces odor

Encourages aerobic decomposition in larger processor

Use smaller compost receptacles and empty into larger processor more frequently

TOILET USAGE:

Approximately 50 campers and staff will split use of toilet with the existing bathhouse

0.6 L urine/person-day (half of the average)

0.3 L human manure/person-day (half of the average)

15 weeks in a season

~ 2.4 m³ human waste per season

COMPOST PROCESSORS:

Two processors made of concrete blocks with corrugated steel roof
~ 2.5 m³ each

One active processor: temperature indicator to monitor aerobic activity, batch time = one year

One inactive processor: add full compost receptacles from toilets

Allow vents for aeration

Leachate collection bucket: reapply to compost to maintain ideal moisture content – excess will evaporate or drain to bucket again

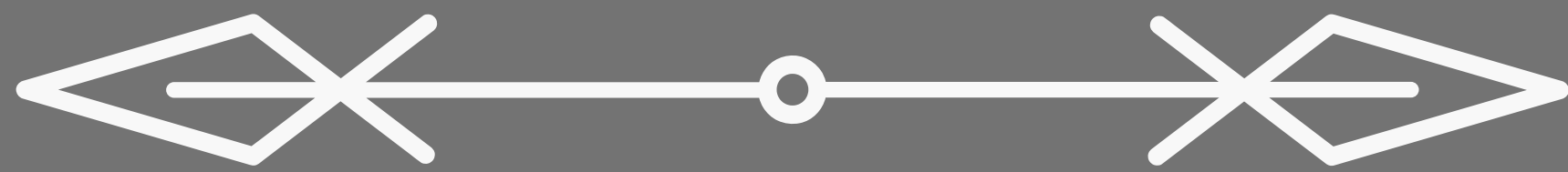
Camp DREAM Archery Range \$20,000



"Never give up on a DREAM because of the time it will take to accomplish it."

- Earl Nightingale

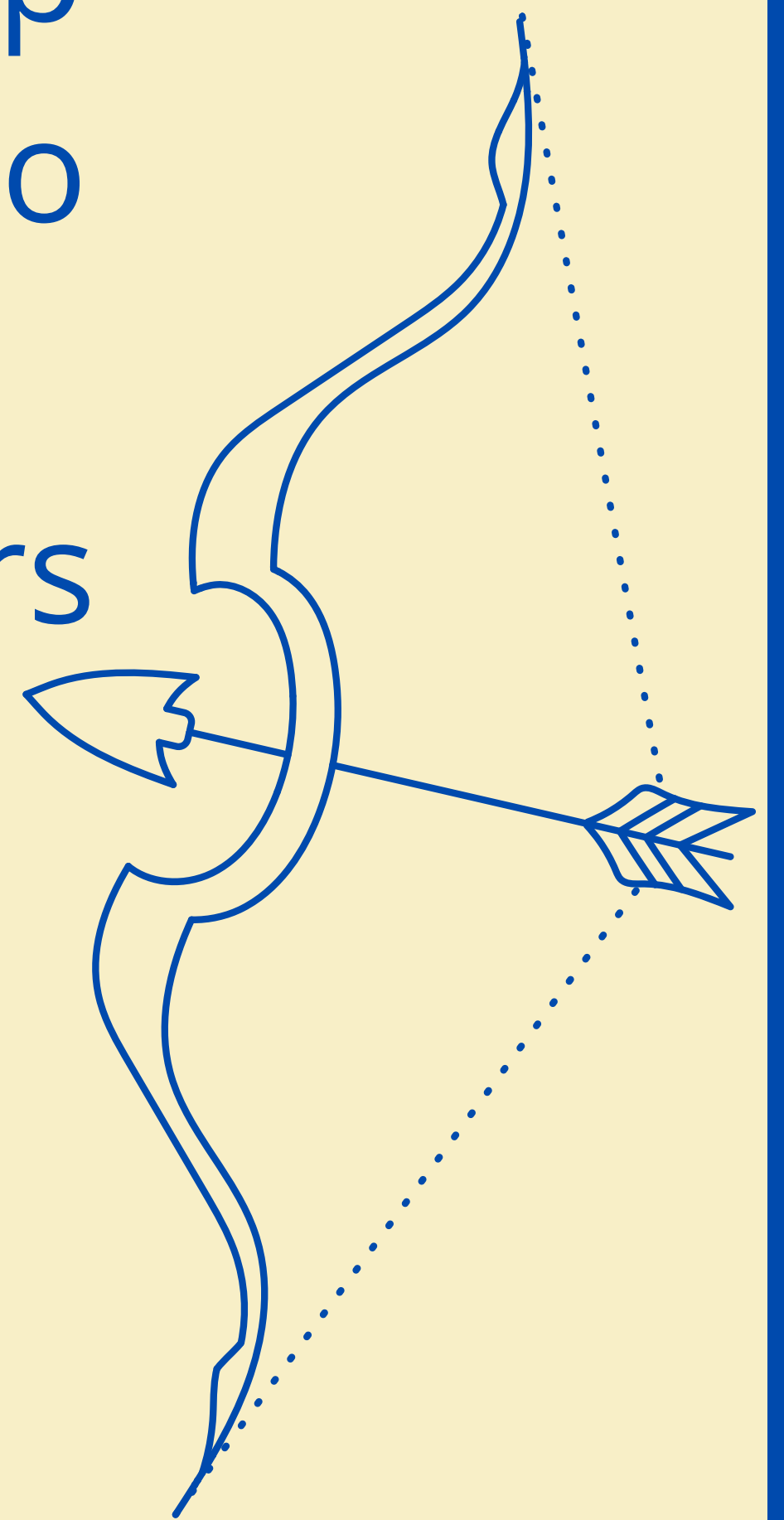
BENEFITS:



ARCHERY is an integral component of summer camp programming for youth. It not only exposes campers to a unique and enjoyable activity but empowers them with essential life skills such as discipline, focus, teamwork, communication, and personal growth. By introducing archery to young individuals, Camp DREAM plays a pivotal role in shaping well-rounded, determined, and responsible youth who adamantly embrace challenges and opportunities for personal enhancement.

PROGRAM START UP:

- Excavator to clear the land
- Equipment: 4-6 targets, 8 bows of varying sizes, 8 arm and finger guards, 4 dozen arrows, 8 ground quivers
- Giant net for the backdrop
- Walk-in shed with a lock to store equipment
- Partial shelter for shooters and staff
- Training: cost to train 4 counselors as Level 1 archery instructors

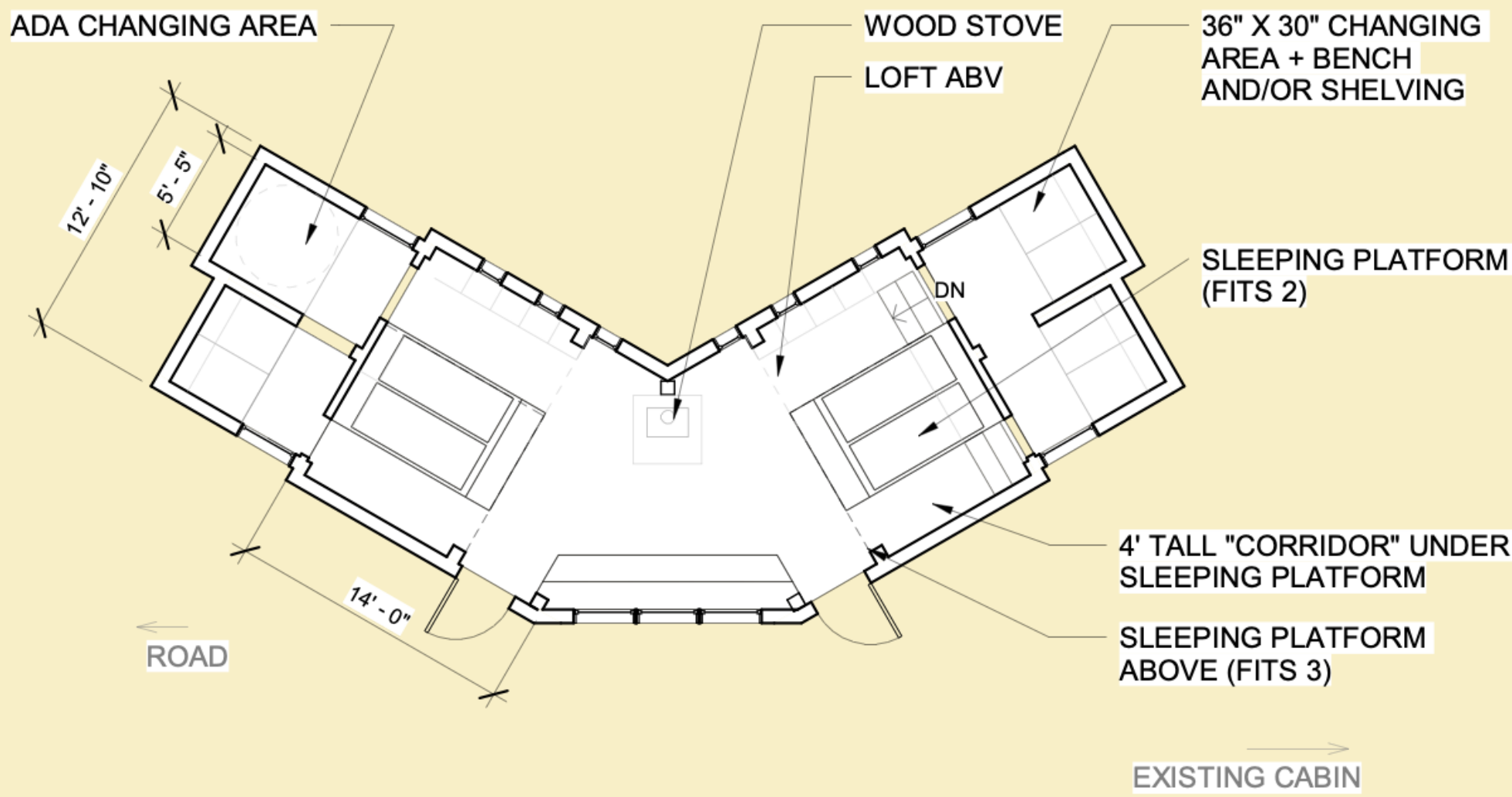
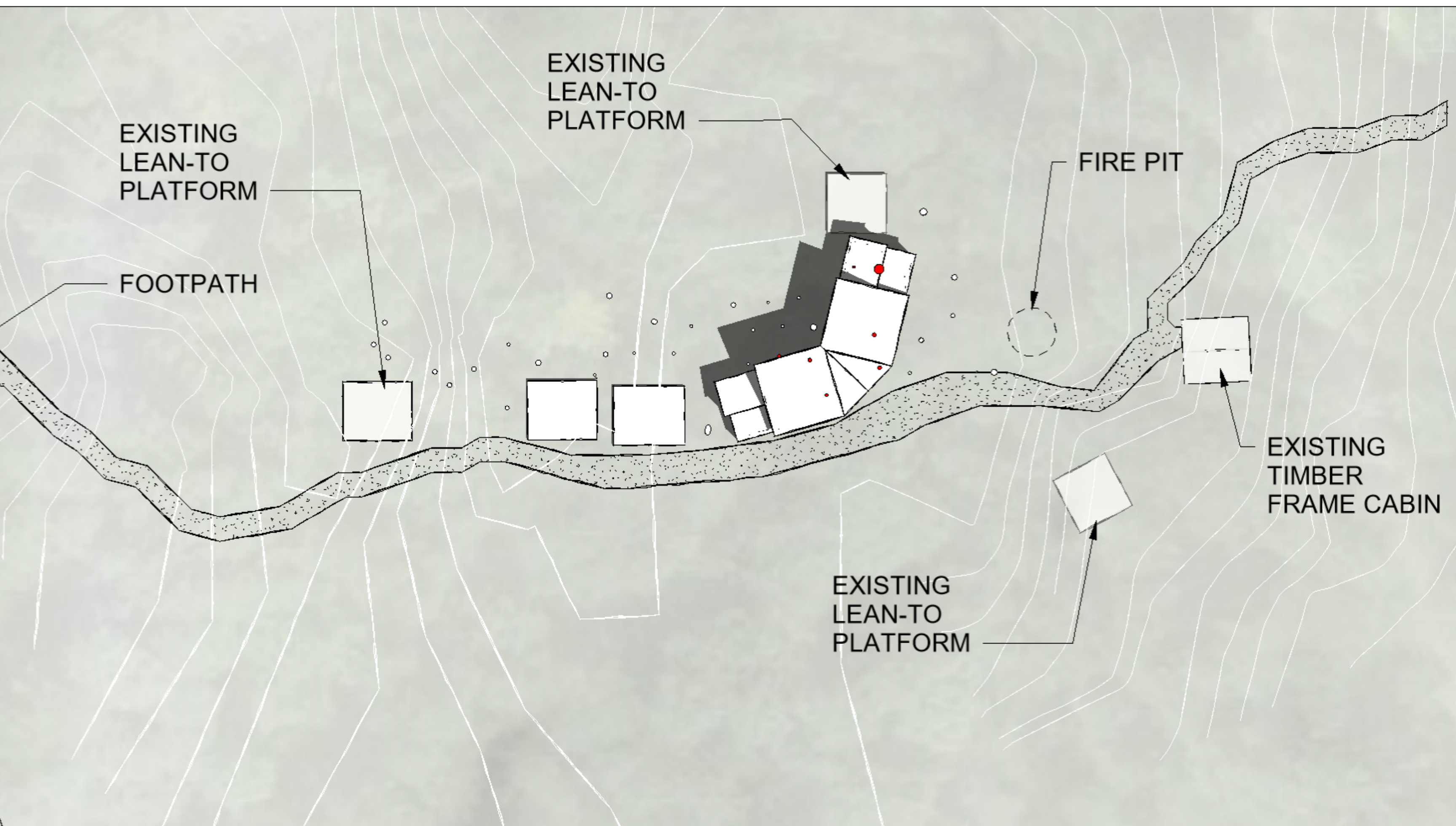


Camp DREAM Cabin \$55,000

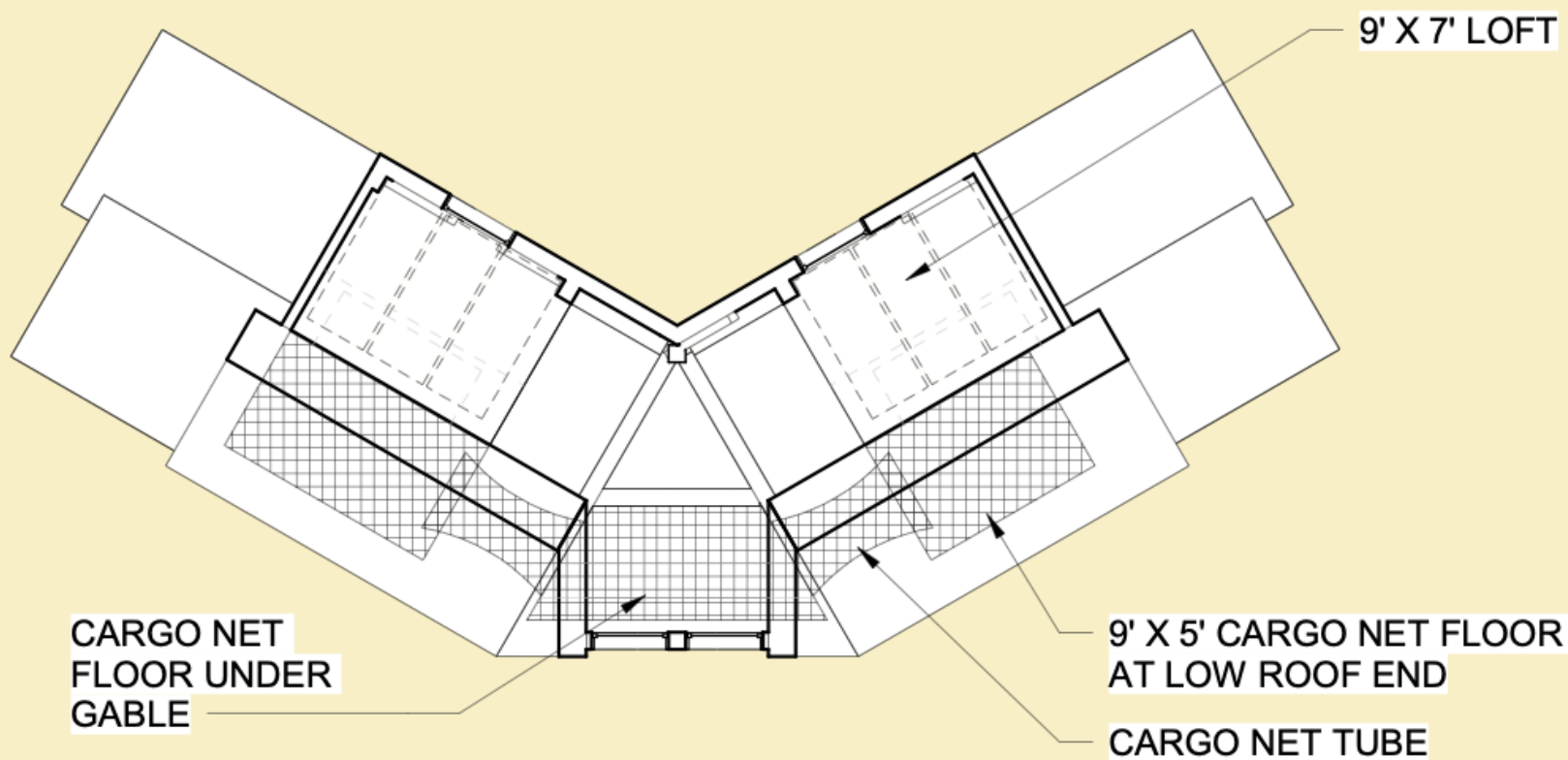


**We DREAM about
our little cabin in
the woods!**





① LAYOUT 1
1/8" = 1'-0"



② LOFT 1
1/8" = 1'-0"

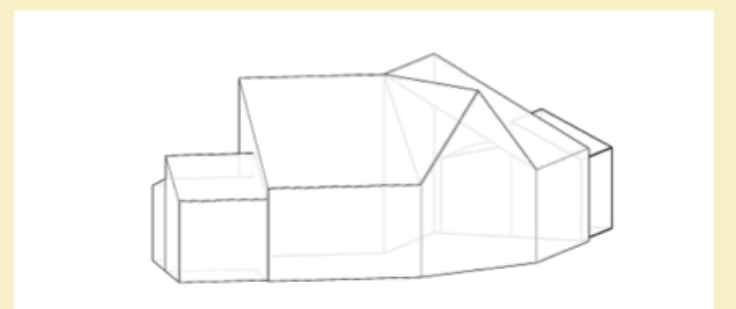
PROS

- + SLEEPING PLATFORMS FIT UP TO 10 CAMPERS, (2) 9' X 7' LOFTS CAN SLEEP AN ADDITIONAL 6 CAMPERS
- + COMBINATION OF CUBBY AND STORAGE SPACES AT BED HEADS AND ALONG NORTH WALL
- + CARGO NETTING/FLOOR HAMMOCK AT LOW END OF LOFT AND UNDER ROOF GABLE
- + SEATING/GATHERING AREA IN FRONT OF WOOD STOVE
- + NOOK/SECRET ENTRY TO CHANGING ROOMS ALONG SOUTHERN WALL
- + WINDOW LAYOUT IS BOTH GOOD FOR NATURAL LIGHTING AND CAPTURING CROSS BREEZES

CONS

- A LOT OF FLOOR SPACE DEVOTED TO CIRCULATION
(ON THE PLUS SIDE, CIRCULATION HAS NICE FLOW AND FEWER BOTTLENECKS)
- IF LOFTS RESERVED AS PLAY AREAS, THEN ONLY SLEEPS 10 CAMPERS

CABIN	410 SF
EAST CHANGING ROOMS	94 SF
WEST CHANGING ROOMS	90 SF
	<hr/> 594 SF
EAST LOFT	63 SF
WEST LOFT	62 SF
	<hr/> 125 SF
Grand total	719 SF



Camp DREAM

Waterfront Access Deck \$20,000





GENERAL INFORMATION:

Level deck with stair access to the existing boating dock and the proposed repurposed swimming dock

Extra wide stairs to the boating dock for easy transport of canoes or kayaks

On-deck storage for campers' shoes and other items

Railings surrounding raised portion of the deck to prevent slips or falls

Pressure-treated pilings and joists for longevity and untreated decking and railings for camper safety

Potential use for other activities such as picnics or crafts

GENERAL CONSTRUCTION:

4x6 pilings with
concrete footings
will support the deck

3 2x12 boards will be
combined to
make the outside
beams

2x8 joists will span the
beams and
support the flooring

5/4 x 6 cedar, pine, or
composite
will be used for deck
boards

Follows tabulated
sizing guidelines

